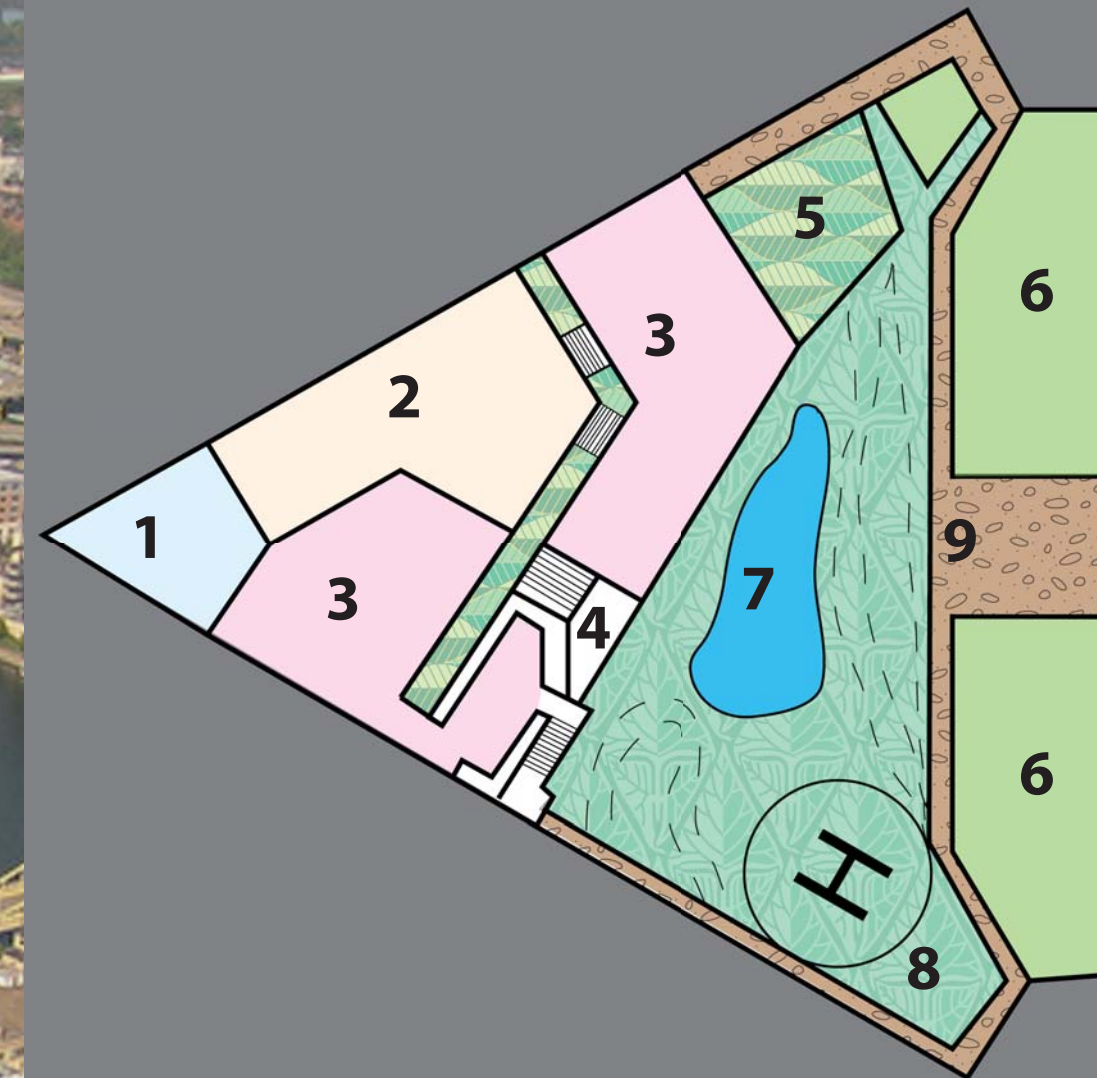


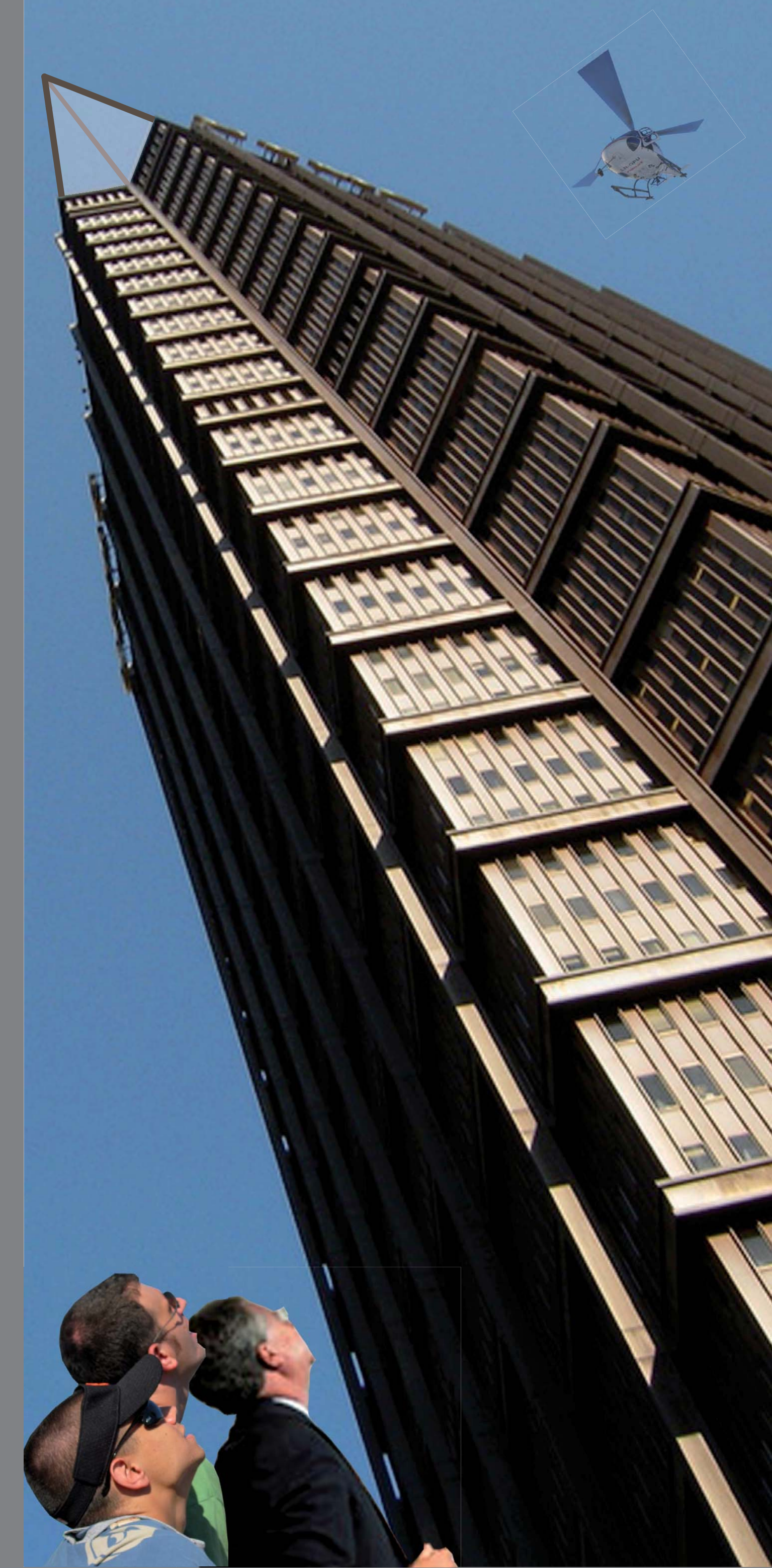
EAT. VIEW. RIDE.

SKY PARK



- PROGRAMS:**
- 1. Outdoor Sky Lounge
 - 2. Indoor Sky Lounge
 - 3. Restaurant / Bar
 - 4. Administration
 - 5. Vertical Farm
 - 6. Community Garden
 - 7. Rainwater Garden
 - 8. Sky Taxi
 - 9. Earth Path

SKY POINT PARK



ECONOMIC SUSTAINABILITY

Restaurant/Bar will bring consistent revenue as they serve the occupants of the U.S. Steel Tower, and Sky Taxi will be the key element to attract tourists of the Pittsburgh.

GREEN TECHNOLOGY

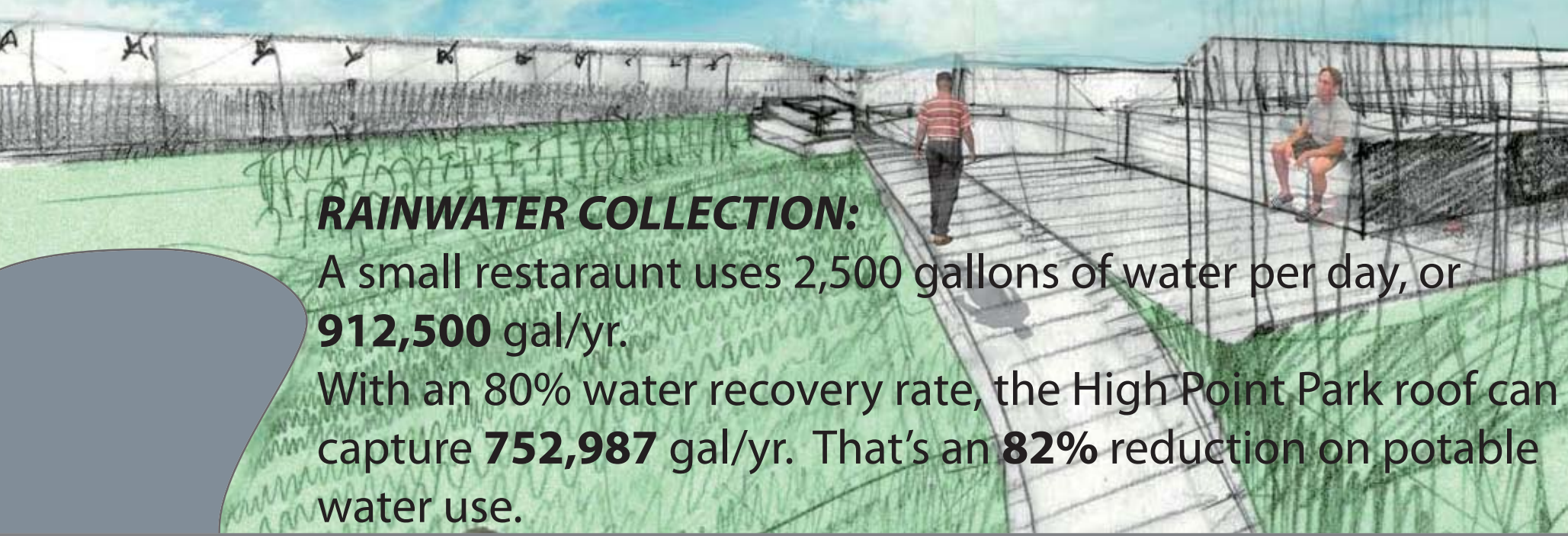
Wind turbines and solar PV attached on the roof will generate electricity while rainwater garden & green space will be the new environment for both humans & animals.

BENEFITS TO SOCIETY

During the weekends, the observation deck will be free to the public, and the community gardens will be the place to go for picnics & grow local plants for the Pittsburghers.

WIND POWER:

A small restaurant uses **24,000** Kwh per year. By using 22 parapet-mounted wind turbines by AeroVironment, **100%** of the High Point Park electricity requirements would be met.



RAINWATER COLLECTION:

A small restaurant uses 2,500 gallons of water per day, or **912,500** gal/yr. With an 80% water recovery rate, the High Point Park roof can capture **752,987** gal/yr. That's an **82%** reduction on potable water use.