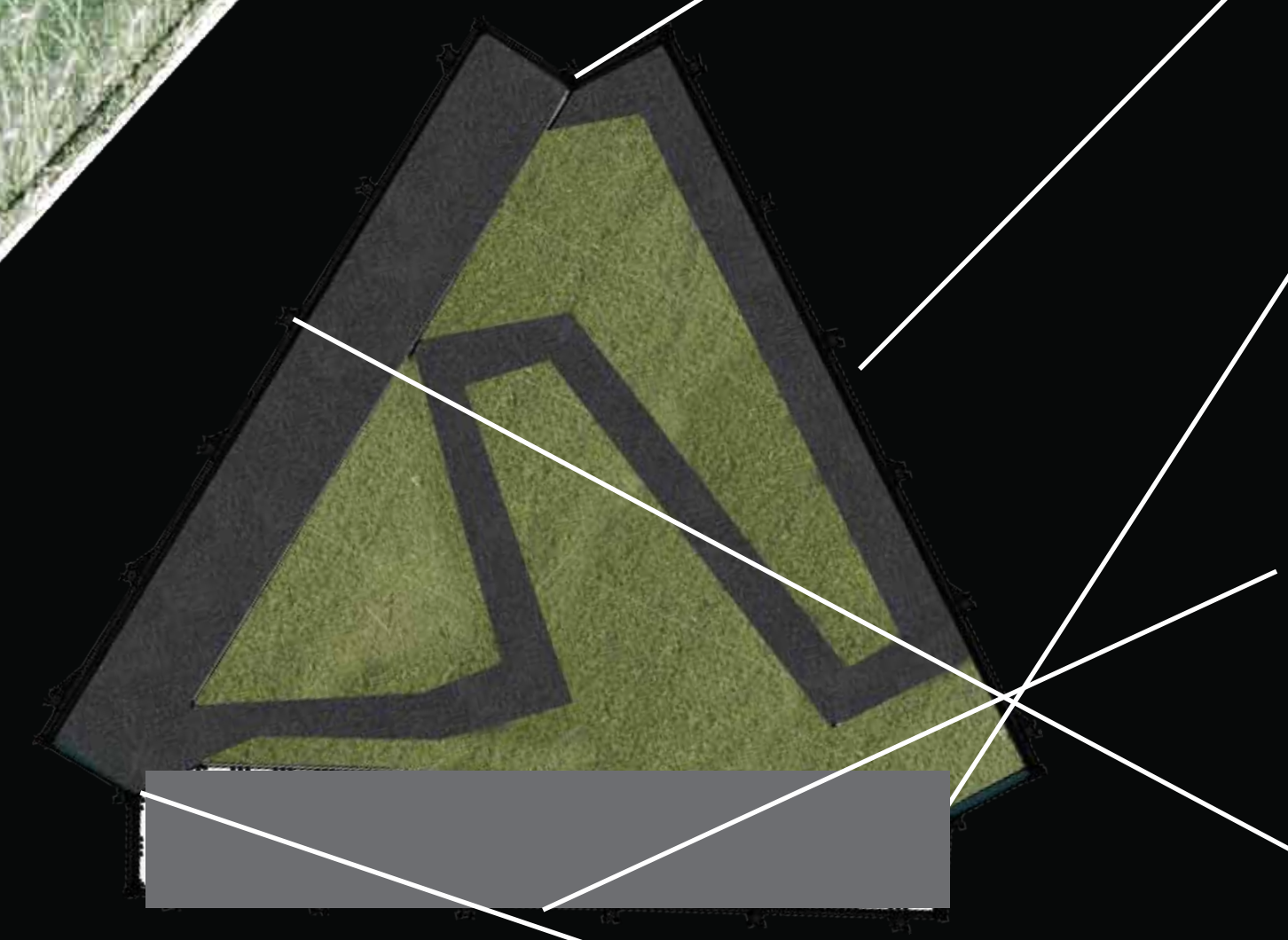
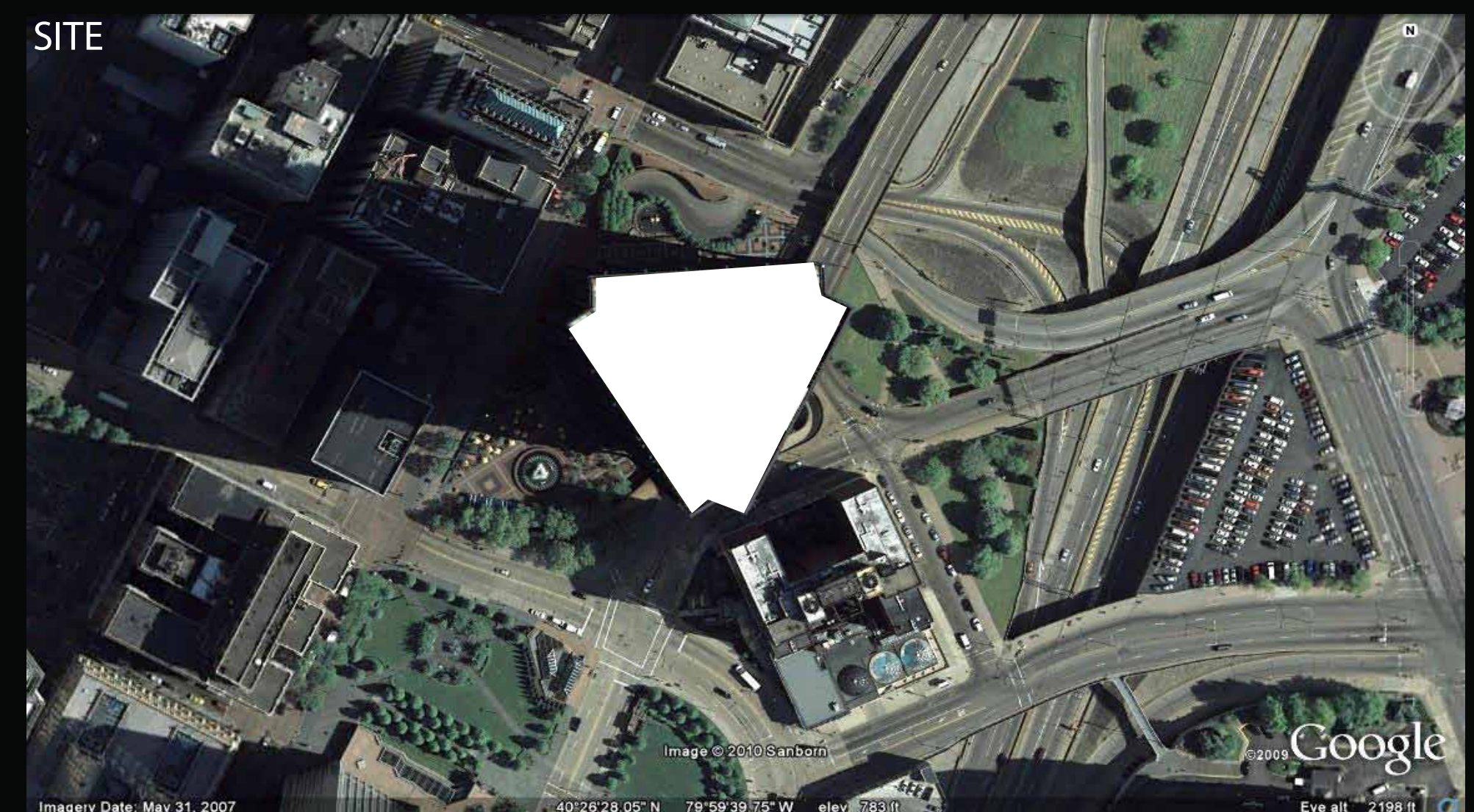
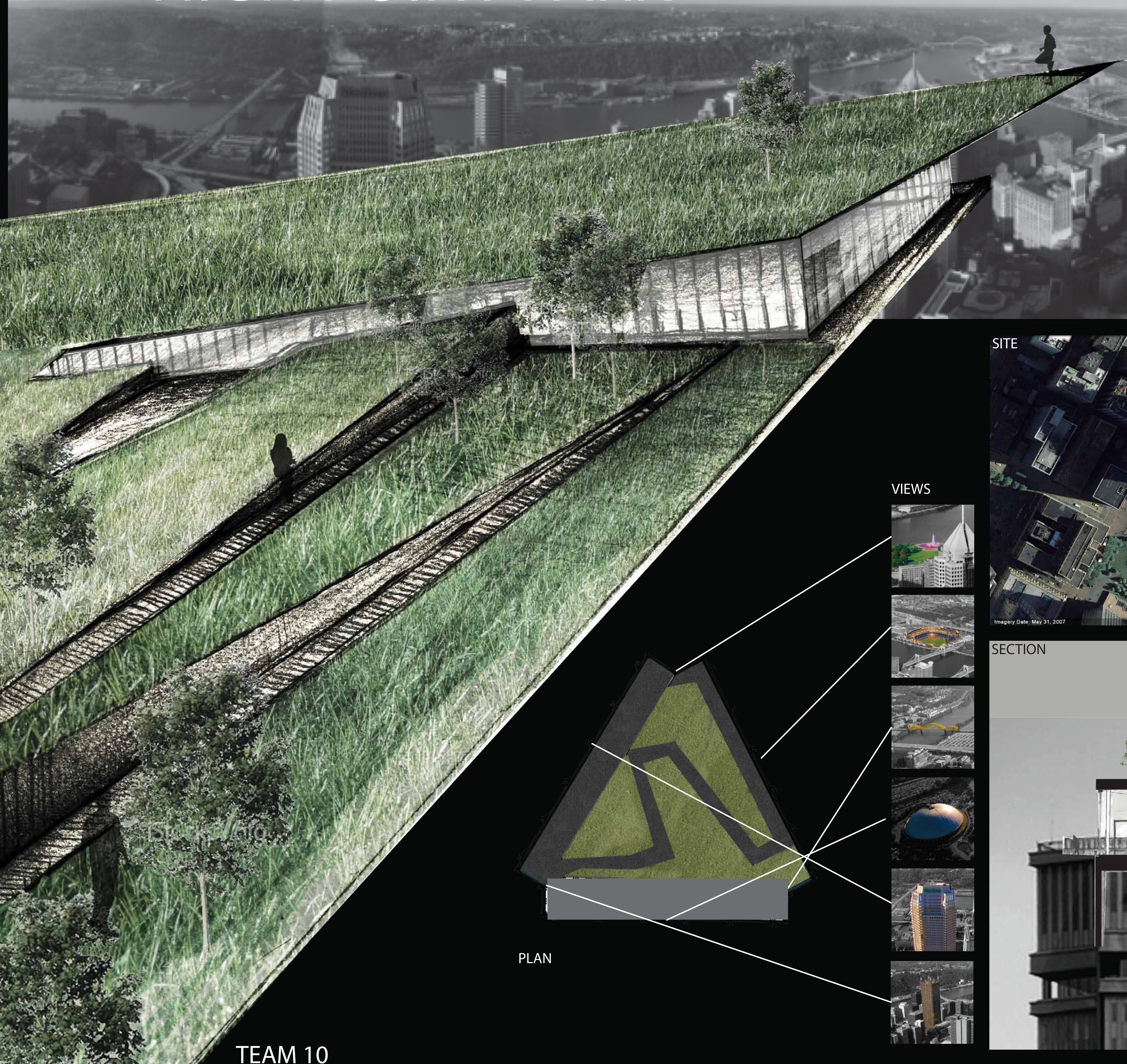


# HIGH POINT PARK

## THE PARK IN THE SKY

Our Vision for High Point Park located on the roof of the 66th floor of the U.S. Steel Building in downtown Pittsburgh is driven by the incredible 180-degree views of the city's iconic Golden Triangle. The Design takes the form a linear path that gradually introduces visitors to the many assets the city has to offer. Visitors emerge into an indoor pavilion on the rooftop via a staircase from the 64th floor, where they are greeted by an uninterrupted view of the convergence of the three rivers. A set of doors leads to the outdoor observation deck that is protected from the pervasive southwest winds by the pavilion. The deck then begins to wrap around the northern side of the building, which exposes views of the Allegheny River Valley. The path then narrows, and visitors are guided into a maze that is regulated by a series of angular hills, and lined by signage about Pittsburgh's history. These hills eventually lead the visitor to a gentle incline along the southern edge of the roof, which exposes views of the Monongahela River Valley. As visitors climb the slope, the view that first greeted them is exposed again, and visitors discover that they are on the roof of the entry pavilion.



PLAN



SECTION